

Beam Power Tube

CERMOLOX

5,000 Watts PEP Output

10,000 Watts Output

Full Input to 400 MHz

Telegraphy or FM Telephony

Sturdy, Reliable, Thoriated Tungsten, Mesh Filaments

ELECTRICAL

Filamentary Cathode:

Type Thoriated-Tungsten Mesh

Voltage (ac or dc) 5.7 typ-6.0 max. V

Current:

Typical value at 5.7 volts. 125 A

Maximum value for starting
even momentarily 300 A

Cold Resistance 0.005 Ω

Minimum heating time 15 s

Mu-Factor (Grid No.2 to Grid No.1) 10

MAXIMUM CCS RATINGS, Absolute-Maximum Values:

Up to 400 MHz

DC Plate Voltage 7000 V

DC Grid-No.2 Voltage 1500 V

DC Plate Current at Peak of Envelope 40 A

Plate Dissipation 5.0 kW

MECHANICAL

Operating Position Vertical, either end up

Weight (Approx.) 6 lb (2.7 kg)

THERMAL^a

Seal Temperature 250 max. °C

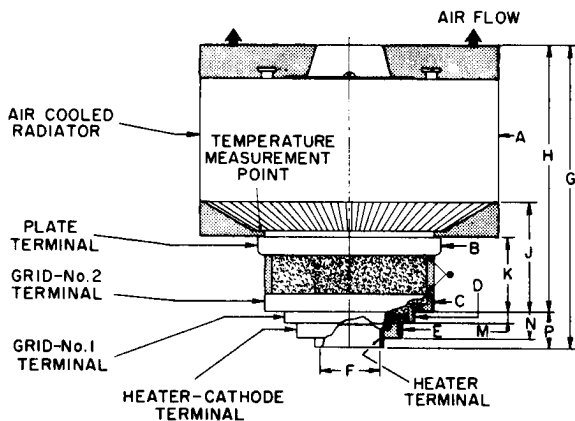
Plate-Core Temperature 250 max. °C

^a See *Dimensional Outline* for temperature measurement points.

^b Keep all stippled regions clear. Do not allow contact or circuit components to intrude into these annular volumes.

Detailed performance and application information is available through your RCA Sales Office, Distributor, or write to RCA Commercial Engineering, Harrison, NJ 07029.

DIMENSIONAL OUTLINE



SEE FOOTNOTE(b)
CERAMIC

• TEMPERATURE
MEASUREMENT POINT

92LM-2542V

DIMENSION	INCHES	MILLIMETERS
A Dia.	4.570 Max.	116.07 Max.
B Dia.	3.235 Min.	82.17 Min.
C Dia.	3.014 Min.	76.52 Min.
D Dia.	2.307 Min.	58.60 Min.
E Dia.	1.840 Min.	46.74 Min.
F Dia.	1.210 Max.	30.73 Max.
G	4.795 ± .080	121.79 ± 2.03
H	4.140 ± .050	105.16 ± 1.27
J	1.940 ± .040	49.28 ± .101
K	1.330 ± .030	33.78 ± .76
M	0.200 ± .025	5.08 ± .63
N	0.475 ± .035	12.06 ± .88
P	0.650 ± .030	16.51 ± .76